

EFG Room, EFG pLay & EFG Flow

Screens for focusing





Design with respect for the environment

Meet the screen systems that let you unite the comfort and integrity of your own space with the flexibility in design of an open-plan office.

Start by building your room with EFG Room sound absorbing screen walls. Reinforce your personal sphere with EFG Flow desk screens. And add EFG pLay on walls, or suspended from the ceiling, for both sound absorption and decoration.

The end result? The same privacy and sound absorption as a cellular office, but with colours and shapes that are so much more fun. All created with the focus on the environment – at work and at large.

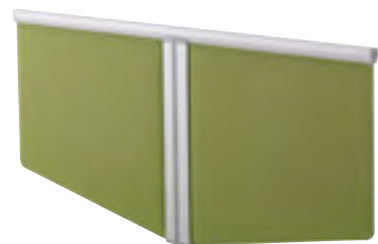
EFG Room



EFG pLay



EFG Flow



Danish design consultancy Blum & Balle has developed our new partitions and panels.

They are well-versed in physiology, ergonomics and furniture design. But they have also designed everything from machine tools to rehabilitation products.



There is a module in tempered glass for straight connection between two screens, giving a more open feel to the room.

EFG Room screen wall

EFG Room is a screen wall system for building rooms within rooms. You decide how private the room will be, as well as the acoustics. EFG Room is available in 45 and 80 mm screen thickness, the latter with Class A sound absorption. The filling material consists of recycled polyester and textile fibres, pressed together with the fabric covering of the screen.





You hear what you want to hear.
And see what you want to see.



The system is available in three heights, three widths and can be configured at angles of 90, 120 or 180 degrees, T and X connection. Freestanding screens may be equipped with castors.

To give a feeling of space and create contact with the surroundings, there is a 375 mm high top section and 230 mm wide screen of tempered glass.



Sound absorbing EFG pLay

EFG pLay is basically a fabric-covered L-shape. The filling, consisting of recycled, sound absorbing polyester fibre and textiles, is pressed together with the panel's fabric covering.

Mount the sound absorbing panels on the wall or hang them from the ceiling. Now let your imagination run riot with colours and shapes, and you can transform the character of the whole room.



The next few pages show some of the ways you can combine EFG pLay.





Capture the spirit of the room with screen and panel colours.



EFG Flow is available in the following lengths 1200, 1400, 1600 and 1800 mm, height adjustable.

EFG Flow desk screen

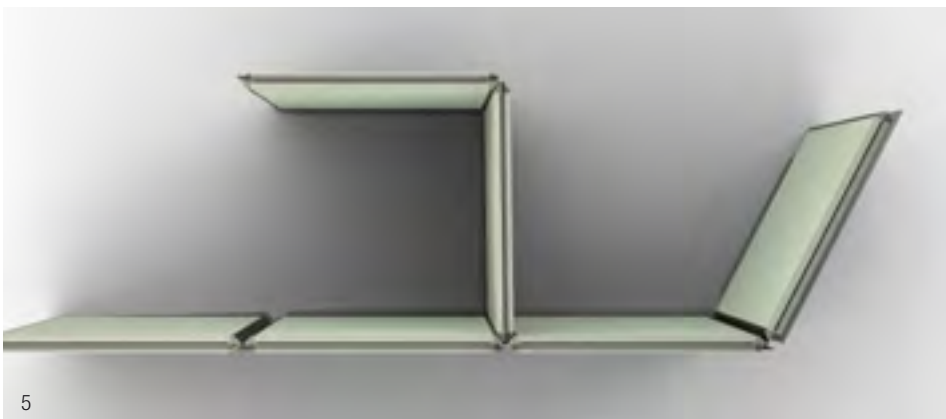
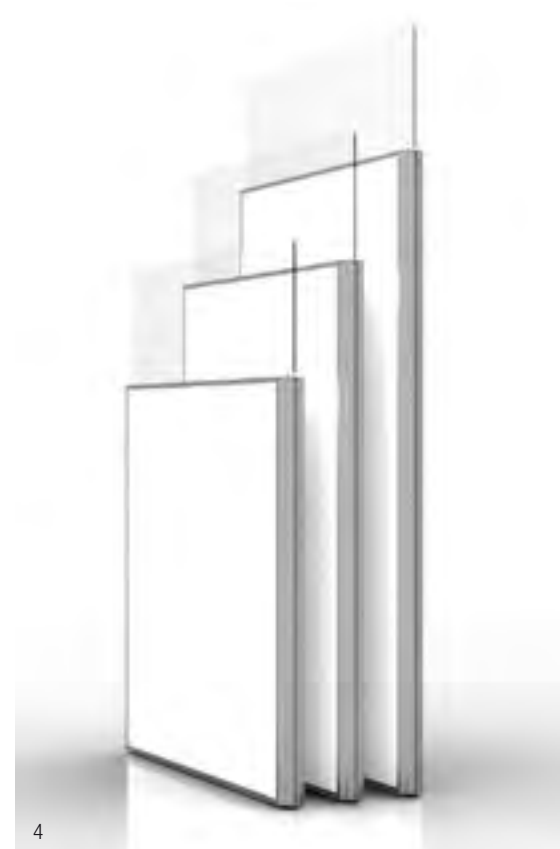
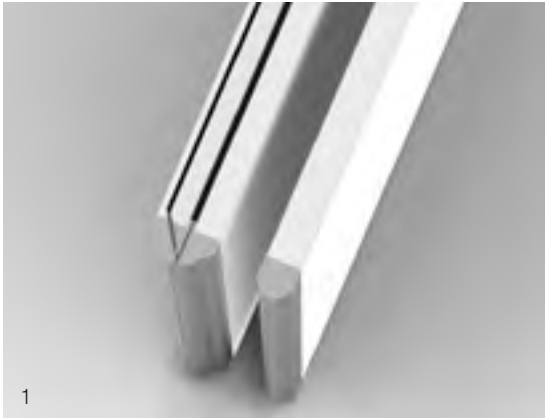
EFG Flow is a desk screen with 25 mm thick filling, consisting of recycled polyester fibre and textiles pressed together with the screen's fabric covering. The screen is then compacted to 5 mm around the edges to give a light impression. The screen has four height settings and is invisibly attached on the central aluminium profile.



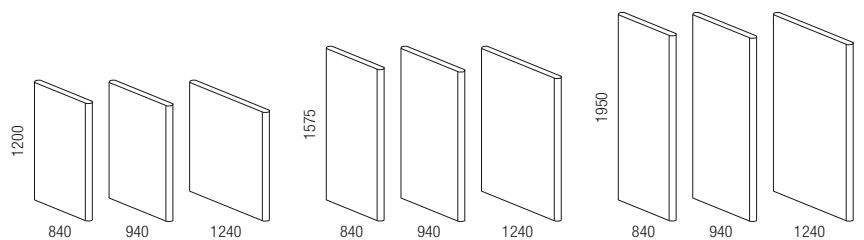
Our design consultants would be pleased to help you find the right fusion of colours, shapes and functions to suit your needs. The following are just a few examples of dimensions and details.

EFG Room

- 1 Available in two thicknesses, 80 mm and 45 mm.
- 2 Both 80 mm and 45 mm modules can be combined for optimal absorption/economy.
- 3 Panel for power/data outlets. Located on one or two sides, from floor or ceiling.

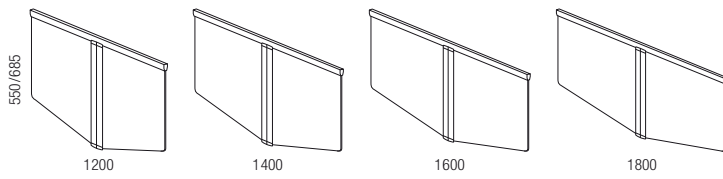


- 4 The screen walls are available in three heights and can be equipped with top sections of tempered glass.
- 5 The walls can easily be reconfigured, they link together with aluminium edge profiles and a flexible rubber strip.
- 6 Adjustable foot as standard, but individual modules may be equipped with castors and used as mobile sound-absorbing panels.



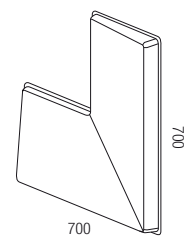
EFG Flow

The central aluminium profile provides stability and can be used for attaching one or two displays. Accessories can be mounted straight onto the screen.



EFG pLay

L-shaped EFG pLay is available in 10 colours as standard and may easily be combined as part of the company's design management.



www.efgoffice.co.uk